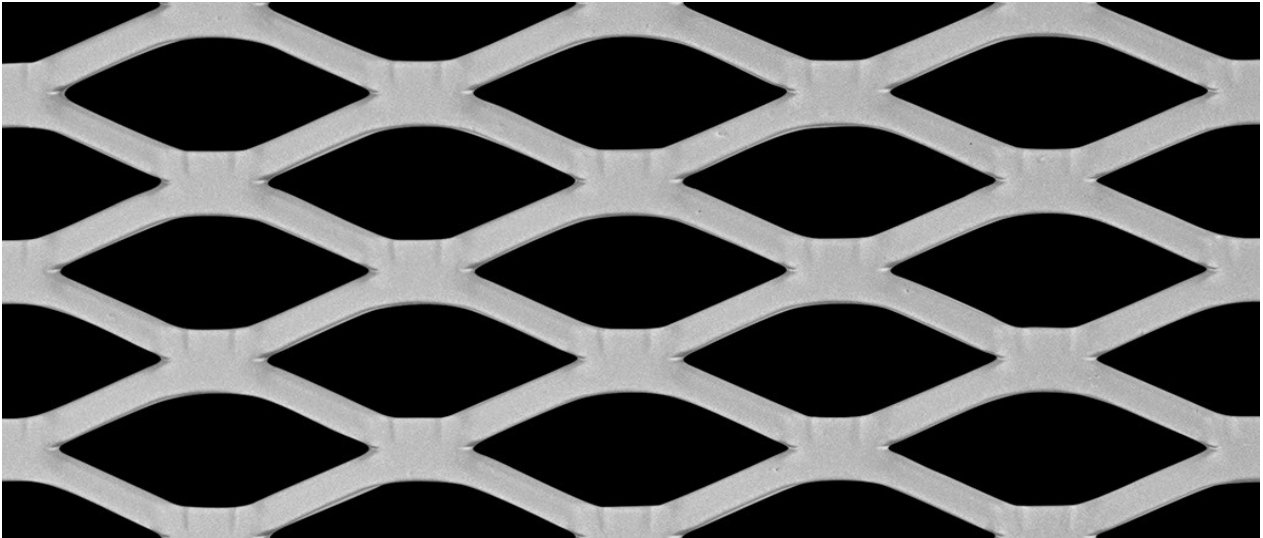




## Expanded Metal – Product Data Sheet – Security Mesh

Mesh Ref No: 50-73F-XXL Flattened Heavy Duty Security Mesh



LW Aperture:	42.93mm	Strand Width:	4.60mm
SW Aperture:	14.22mm	Thickness:	2.69mm
Weight:	8.59 kg / m <sup>2</sup>	Open Area:	61%

Material:	Mild Steel – Hot Rolled to BS EN 10111
Sheet Size:	2440mm LWD x 3000mm SWD

All expanded metal products are manufactured from a single piece of raw material and are created as a continuous mesh with no joints or loose strands. The finished product has a greater strength to weight ratio than the un-expanded parent material. Available in sheets or coil form (certain products only). Expanded metal by its very nature is a green product with almost no wastage arising from the manufacturing process. Additional specification variations are available, please contact us for more information.

© Metal Mesh UK Limited. All Rights Reserved.

Freephone: 0800 999 2089  
[www.metal-mesh.co.uk](http://www.metal-mesh.co.uk)

Tel: +44 (0)1386 555 500  
[sales@metal-mesh.co.uk](mailto:sales@metal-mesh.co.uk)

Metal Mesh UK Limited. Reet House, Keytec East Business Park, Pershore, Worcestershire, WR10 2NX.